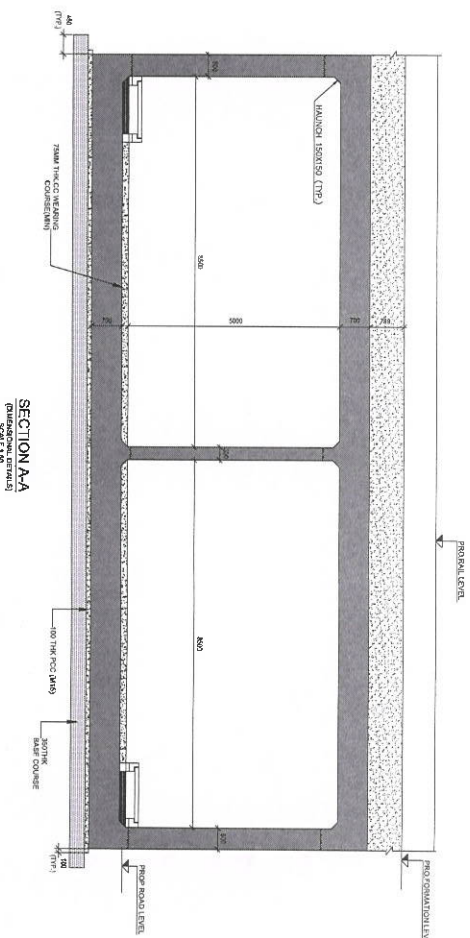
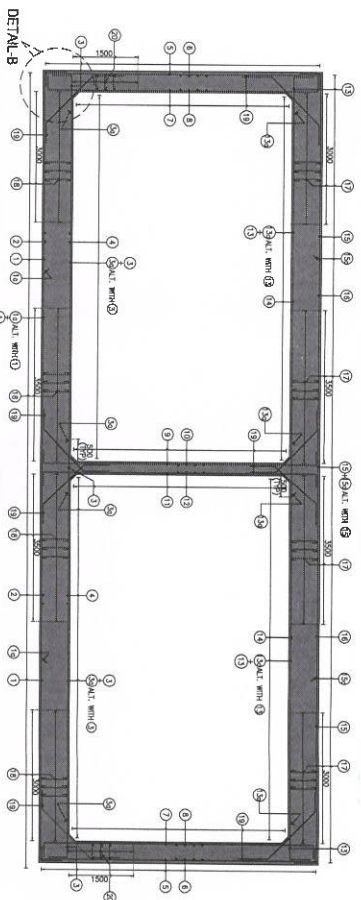


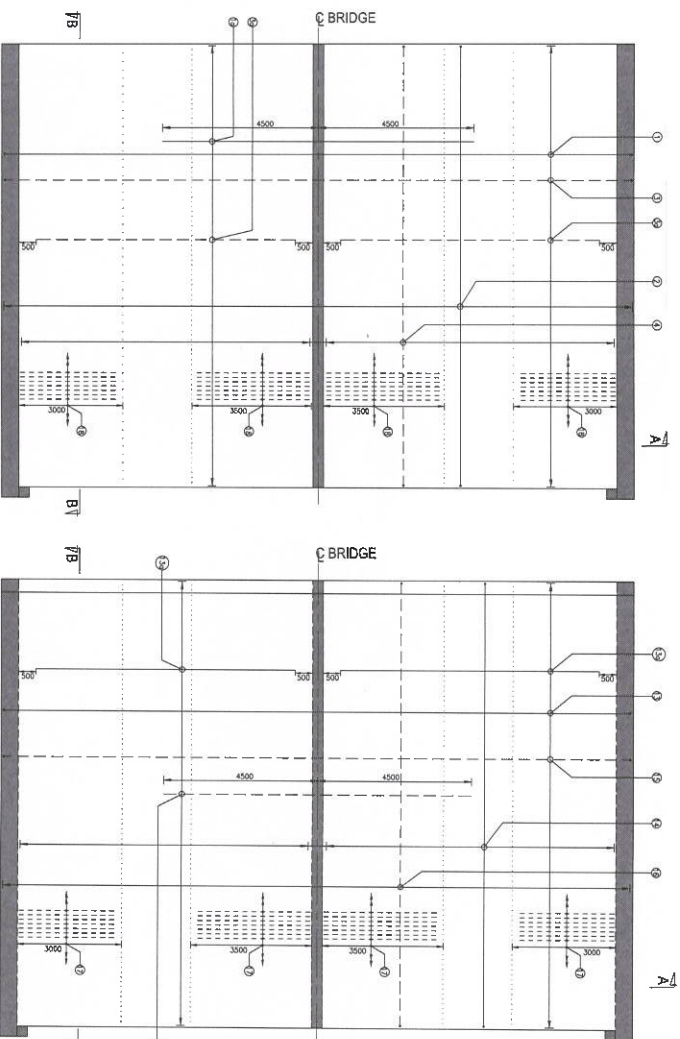
KEY PLAN



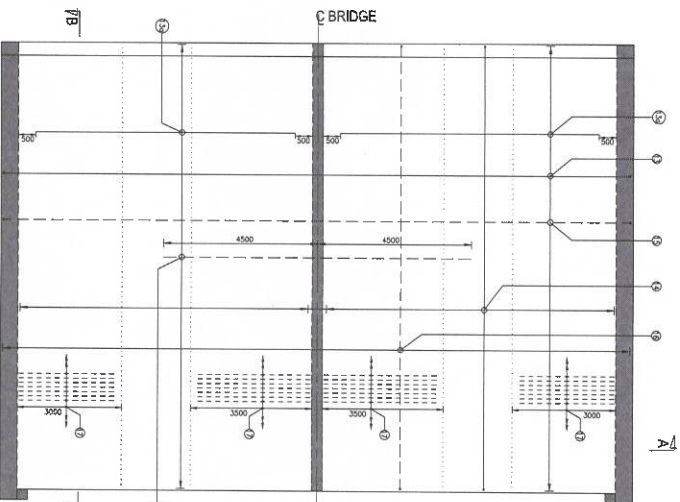
SECTION AA
GENERAL DETAILS
SCALE 1:10



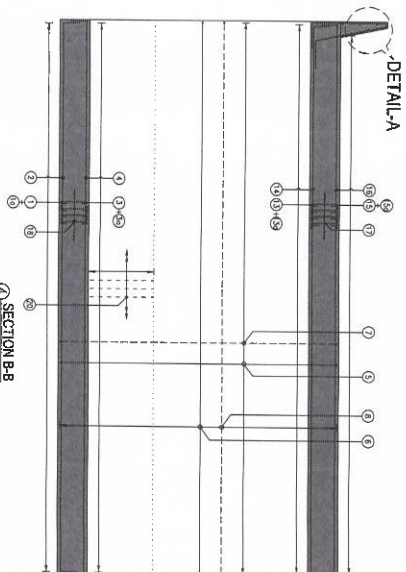
SECTION AA
GENERAL DETAILS
SCALE 1:10



PLAN AT BOTTOM SLAB LEVEL
SCALE 1:10



PLAN AT TOP SLAB LEVEL
SCALE 1:10



DETAIL A
SCALE 1:10

NO.	REINFORCEMENT	BAR SIZE
1	250 150 6/8	16
2	250 150 6/8	16
3	250 150 6/8	16
4	250 150 6/8	16
5	250 150 6/8	16
6	250 150 6/8	16
7	250 150 6/8	16
8	250 150 6/8	16
9	250 150 6/8	16
10	250 150 6/8	16
11	250 150 6/8	16
12	250 150 6/8	16
13	250 150 6/8	16
14	250 150 6/8	16
15	250 150 6/8	16
16	250 150 6/8	16
17	250 150 6/8	16
18	250 150 6/8	16
19	250 150 6/8	16
20	250 150 6/8	16
21	250 150 6/8	16
22	250 150 6/8	16
23	250 150 6/8	16
24	250 150 6/8	16
25	250 150 6/8	16
26	250 150 6/8	16
27	250 150 6/8	16
28	250 150 6/8	16
29	250 150 6/8	16
30	250 150 6/8	16
31	250 150 6/8	16
32	250 150 6/8	16
33	250 150 6/8	16
34	250 150 6/8	16
35	250 150 6/8	16
36	250 150 6/8	16
37	250 150 6/8	16
38	250 150 6/8	16
39	250 150 6/8	16
40	250 150 6/8	16
41	250 150 6/8	16
42	250 150 6/8	16
43	250 150 6/8	16
44	250 150 6/8	16
45	250 150 6/8	16
46	250 150 6/8	16
47	250 150 6/8	16
48	250 150 6/8	16
49	250 150 6/8	16
50	250 150 6/8	16
51	250 150 6/8	16
52	250 150 6/8	16
53	250 150 6/8	16
54	250 150 6/8	16
55	250 150 6/8	16
56	250 150 6/8	16
57	250 150 6/8	16
58	250 150 6/8	16
59	250 150 6/8	16
60	250 150 6/8	16
61	250 150 6/8	16
62	250 150 6/8	16
63	250 150 6/8	16
64	250 150 6/8	16
65	250 150 6/8	16
66	250 150 6/8	16
67	250 150 6/8	16
68	250 150 6/8	16
69	250 150 6/8	16
70	250 150 6/8	16
71	250 150 6/8	16
72	250 150 6/8	16
73	250 150 6/8	16
74	250 150 6/8	16
75	250 150 6/8	16
76	250 150 6/8	16
77	250 150 6/8	16
78	250 150 6/8	16
79	250 150 6/8	16
80	250 150 6/8	16
81	250 150 6/8	16
82	250 150 6/8	16
83	250 150 6/8	16
84	250 150 6/8	16
85	250 150 6/8	16
86	250 150 6/8	16
87	250 150 6/8	16
88	250 150 6/8	16
89	250 150 6/8	16
90	250 150 6/8	16
91	250 150 6/8	16
92	250 150 6/8	16
93	250 150 6/8	16
94	250 150 6/8	16
95	250 150 6/8	16
96	250 150 6/8	16
97	250 150 6/8	16
98	250 150 6/8	16
99	250 150 6/8	16
100	250 150 6/8	16

SCHEDULE OF REINFORCEMENT

NOTES:
1. ALL DIMENSIONS ARE IN METERS, UNLESS SPECIFIED OTHERWISE.
2. ALL DIMENSIONS ARE TO FACE, UNLESS SPECIFIED OTHERWISE.
3. ALL DIMENSIONS ARE TO CENTERLINE, UNLESS SPECIFIED OTHERWISE.
4. ALL DIMENSIONS ARE TO CENTERLINE, UNLESS SPECIFIED OTHERWISE.
5. ALL DIMENSIONS ARE TO CENTERLINE, UNLESS SPECIFIED OTHERWISE.
6. ALL DIMENSIONS ARE TO CENTERLINE, UNLESS SPECIFIED OTHERWISE.
7. ALL DIMENSIONS ARE TO CENTERLINE, UNLESS SPECIFIED OTHERWISE.
8. ALL DIMENSIONS ARE TO CENTERLINE, UNLESS SPECIFIED OTHERWISE.
9. ALL DIMENSIONS ARE TO CENTERLINE, UNLESS SPECIFIED OTHERWISE.
10. ALL DIMENSIONS ARE TO CENTERLINE, UNLESS SPECIFIED OTHERWISE.

REFERENCE

1. GENERAL ARRANGEMENT DRAWING: DWG NO. 022077-BSPR-CR2-C-UB-0-10-1214
2. SECTION AA: DWG NO. 022077-BSPR-CR2-C-UB-0-10-1214
3. SECTION BB: DWG NO. 022077-BSPR-CR2-C-UB-0-10-1214
4. SECTION CC: DWG NO. 022077-BSPR-CR2-C-UB-0-10-1214
5. SECTION DD: DWG NO. 022077-BSPR-CR2-C-UB-0-10-1214
6. SECTION EE: DWG NO. 022077-BSPR-CR2-C-UB-0-10-1214
7. SECTION FF: DWG NO. 022077-BSPR-CR2-C-UB-0-10-1214
8. SECTION GG: DWG NO. 022077-BSPR-CR2-C-UB-0-10-1214
9. SECTION HH: DWG NO. 022077-BSPR-CR2-C-UB-0-10-1214
10. SECTION II: DWG NO. 022077-BSPR-CR2-C-UB-0-10-1214

Structural Design Proof - Checked
and Found Satisfactory

Dr. A. MEHER PRASAD
Professor

Department of Civil Engineering
Indian Institute of Technology Madras
Chennai - 600 036, India

EMPLOYER:

RAIL INFRASTRUCTURE DEVELOPMENT
COMPANY (KARNATAKA) LIMITED

GENERAL CONSULTANTS:

AECOM @ IIRDP AECOM-EGIS-WSP

CONTRACTOR:

L&T CONSTRUCTION

PROOF CONSULTANT:

INDIAN INSTITUTE OF TECHNOLOGY MADRAS
IT P.O., CHENNAI 600 036

DETAILED DESIGN CONSULTANT (DDC):

L&T CONSTRUCTION
EDRC-SPECIAL BRIDGES - TICC

STUP CONSULTANTS P.L. LTD.
P.O. Box 100, New Market, Chennai - 600 029

DIMENSIONAL AND REINFORCEMENT DETAILS
BENGALURU SUBURBAN RAILWAY PROJECT (BSRP)
K-RIDE CORRIDOR - 2

PROPOSED EXTENSION OF EXISTING RUB
RCC BOX 2 X 7.0 X 5.085 WITH PROPOSED RUB
RCC BOX 2 X 8.5 X 5.15 (CLEAR HEIGHT-5.0M)
AT 12/100MM IN LIEU OF EXISTING LC NO.6 AT BSRP CH-22+940
EXG. LEVEL CROSSING
BETWEEN CHIKKA BANAVARA TO BENNINGAHALLI STATIONS.

RAIL LOADING STANDARD : 25 T AXLE LOADING (2008)

DRG. No.No.022077-BSPR-CR2-C-UB-0-10-1214 SCALE 1:100 (UNLESS NOTED)